

Luminaire Specification

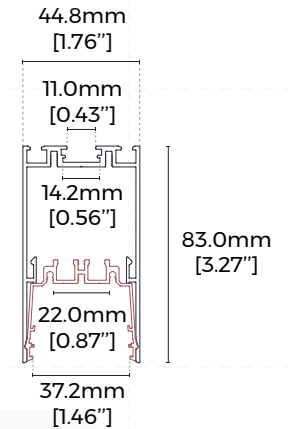
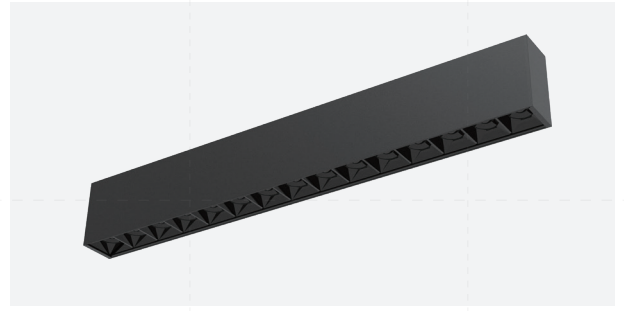
LH40G

— LINE 40 series



【Basic Parameters】

- Material: AL6063-T5, spraying surface
- Coating: Black (RAL9005), White (RAL9003), Champagne Gold, Rose Gold, Matt Green(RAL6019), Matt Orange(RAL2008), Matt Yellow(RAL1004), Matt Blue(RAL5012)
- Length: 1200mm/1500mm /1700mm/2300mm optional
- IP grade: IP20
- CCT: 2700/3000/3500/4000/5000/6500/2700-6500K optional
- CRI: 80/90
- SDCM: <3 Step (ANSI)
- Beam angle: 18°/30°/45°
- U G R: UGR≤10(X=4H,Y=8H) (18°/30°), UGR≤19(X=4H,Y=8H)(45°)
- Light efficiency: 70(18°) /85(30° / 45°)(CCT tunable) lm/W , 85(18°) /100(30° / 45°)(Normal&Emergency) lm/W
- Input voltage: AC200-240V
- Lighting direction: upward&downward
- Dimming method: Non / 1-10V / DALI+push optional
- Application: Indoor
- Certification: CE, UKCA, ROHS, Reach
- Warranty: 5 years(Emergency power version:3 years)



【Luminaire Parameters】

Version	Model	Length	Input Voltage (V)	Max. Current (A)	Type Power (W)	Max. Power (W)	Beam Angle (°)	CRI	CCT	Lumen (LM)	
Normal/ Emergency	LH40C	1200mm [3.94ft]	200-240 VAC	0.20 [0.05A/ft]	41.0 [10.41W/ft]	45.1 [11.45W/ft]	30°/45°	>80	2700K	3815 [970LM/ft]	
									3000K	3895 [990LM/ft]	
									3500K	3975 [1010LM/ft]	
									4000K	4100 [1040LM/ft]	
									5000K	4100 [1040LM/ft]	
									6500K	4100 [1040LM/ft]	
									>90	2700K	3280 [830LM/ft]
										3000K	3350 [850LM/ft]
3500K	3420 [870LM/ft]										
4000K	3525 [895LM/ft]										

Normal	LH40G	1500mm [4.92ft]	200-240 VAC	0.27 [0.05A/ft]	56.0 [11.38W/ft]	61.6 [12.52W/ft]	30°/45°	>80	2700K	5210 [1060LM/ft]
									3000K	5320 [1080LM/ft]
									3500K	5430 [1105LM/ft]
									4000K	5600 [1140LM/ft]
									5000K	5600 [1140LM/ft]
									6500K	5600 [1140LM/ft]
		>90		2700K	4480 [910LM/ft]					
				3000K	4575 [930LM/ft]					
				3500K	4670 [950LM/ft]					
				4000K	4815 [980LM/ft]					
				>80	2700K	5765 [1035LM/ft]				
					3000K	5890 [1055LM/ft]				
	3500K	6015 [1080LM/ft]								
	4000K	6200 [1110LM/ft]								
	5000K	6200 [1110LM/ft]								
	6500K	6200 [1110LM/ft]								
	>90	2700K	4960 [890LM/ft]							
		3000K	5065 [910LM/ft]							
		3500K	5170 [925LM/ft]							
		4000K	5330 [955LM/ft]							
		>80	2700K	7440 [985LM/ft]						
			3000K	7600 [1005LM/ft]						
	3500K		7760 [1030LM/ft]							
	4000K		8000 [1060LM/ft]							
5000K	8000 [1060LM/ft]									
6500K	8000 [1060LM/ft]									
>90	2700K	6400 [850LM/ft]								
	3000K	6535 [865LM/ft]								
	3500K	6675 [885LM/ft]								
	4000K	6880 [910LM/ft]								
1700mm [5.58ft]	200-240 VAC	0.30 [0.04A/ft]	62.0 [11.11W/ft]	68.2 [12.22W/ft]	>80	2700K	5765 [1035LM/ft]			
						3000K	5890 [1055LM/ft]			
						3500K	6015 [1080LM/ft]			
						4000K	6200 [1110LM/ft]			
						5000K	6200 [1110LM/ft]			
						6500K	6200 [1110LM/ft]			
>90		2700K	4960 [890LM/ft]							
		3000K	5065 [910LM/ft]							
		3500K	5170 [925LM/ft]							
		4000K	5330 [955LM/ft]							
		>80	2700K	7440 [985LM/ft]						
			3000K	7600 [1005LM/ft]						
3500K	7760 [1030LM/ft]									
4000K	8000 [1060LM/ft]									
5000K	8000 [1060LM/ft]									
6500K	8000 [1060LM/ft]									
>90	2700K	6400 [850LM/ft]								
	3000K	6535 [865LM/ft]								
	3500K	6675 [885LM/ft]								
	4000K	6880 [910LM/ft]								
2300mm [7.55ft]	200-240 VAC	0.39 [0.05A/ft]	80.0 [10.60W/ft]	88.0 [11.66W/ft]	>80	2700K	7440 [985LM/ft]			
						3000K	7600 [1005LM/ft]			
						3500K	7760 [1030LM/ft]			
						4000K	8000 [1060LM/ft]			
						5000K	8000 [1060LM/ft]			
						6500K	8000 [1060LM/ft]			
>90		2700K	6400 [850LM/ft]							
		3000K	6535 [865LM/ft]							
		3500K	6675 [885LM/ft]							
		4000K	6880 [910LM/ft]							

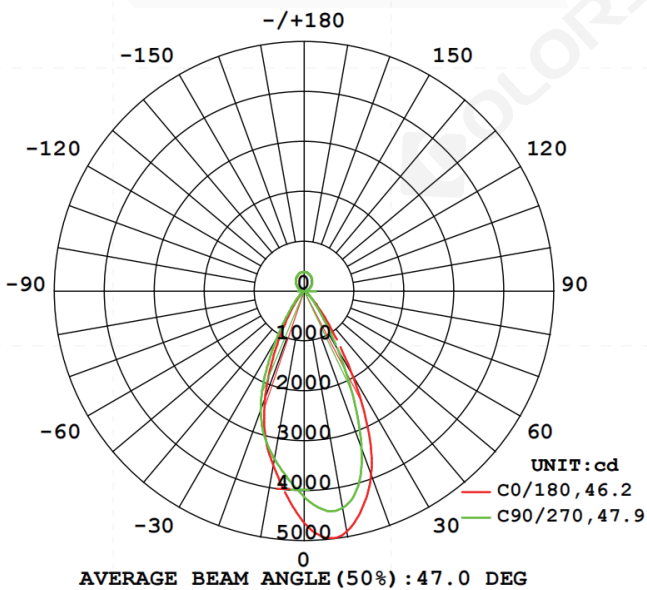
Dial switch CCT tunable	LH40G	200-240 VAC	1200mm [3.94ft]	0.20 [0.05A/ft]	41.0 [10.41W/ft]	45.1 [11.45W/ft]	30°/45° >90	2700K	3155 [800LM/ft]
			1500mm [4.92ft]	0.27 [0.05A/ft]	56.0 [11.38W/ft]	61.6 [12.52W/ft]		4000K	3360 [855LM/ft]
			1700mm [5.58ft]	0.30 [0.04A/ft]	62.0 [11.11W/ft]	68.2 [12.22W/ft]		6500K	3525 [895LM/ft]
			2300mm [7.55ft]	0.39 [0.05A/ft]	80.0 [10.60W/ft]	88.0 [11.66W/ft]		2700K	4310 [875LM/ft]
								4000K	4590 [935LM/ft]
								6500K	4815 [980LM/ft]
								2700K	4775 [855LM/ft]
								4000K	5085 [910LM/ft]
								6500K	5330 [955LM/ft]
								2700K	6160 [815LM/ft]
								4000K	6560 [870LM/ft]
								6500K	6880 [910LM/ft]

Note:

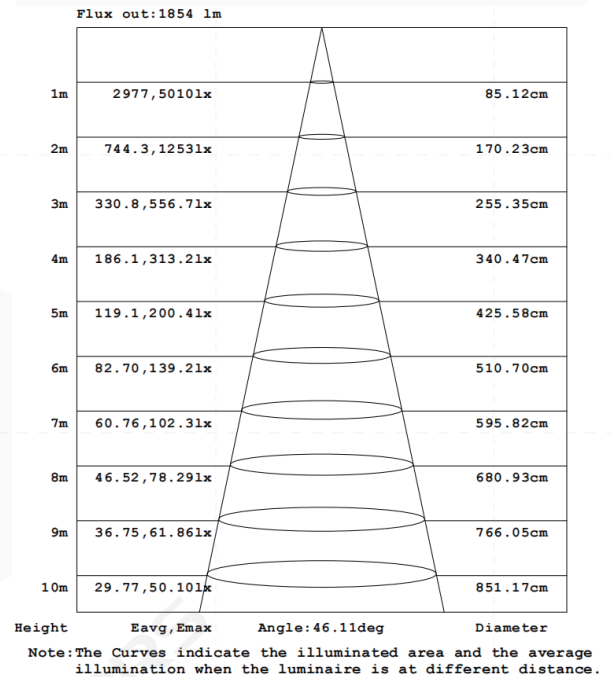
1. The output data is based on the testing result of Ra80,4000k,white luminaires;
2. The tolerance of output data can be vary up to 10%;
3. The output data is typical value;
- 4.The luminous flux of black luminaire is 100% of white luminaire.

【Optical Parameter】

[Normal/Emergency]

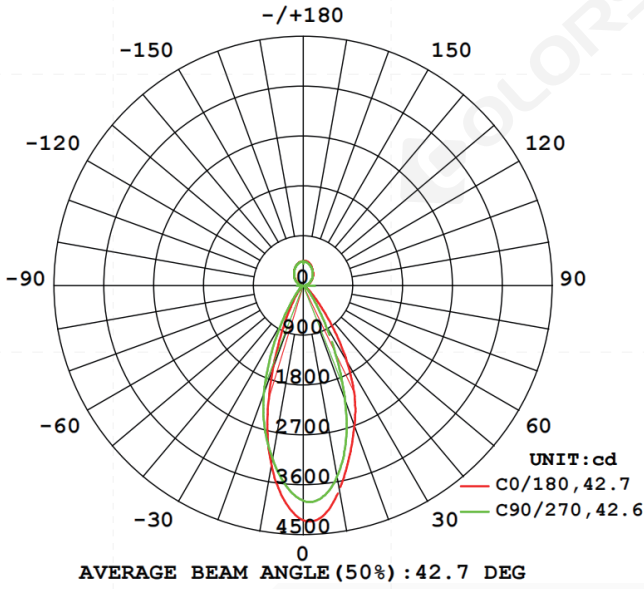


Luminous intensity
distribution diagram

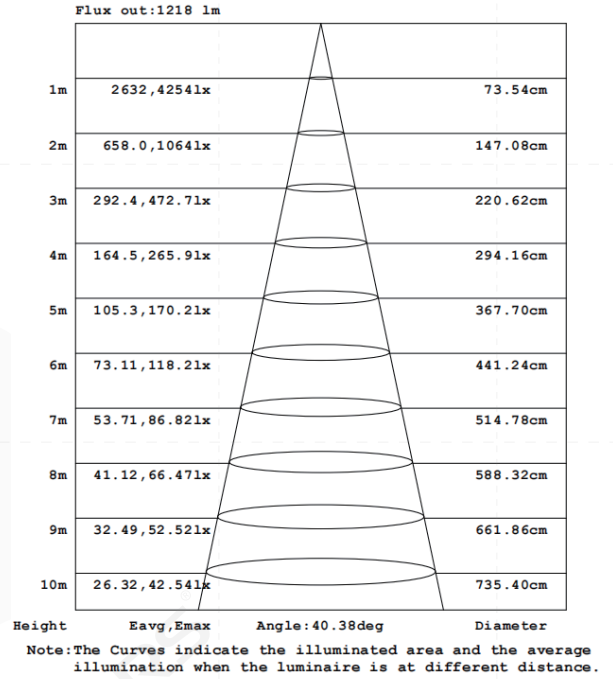


AAI Figure

[Dial switch CCT tunable]

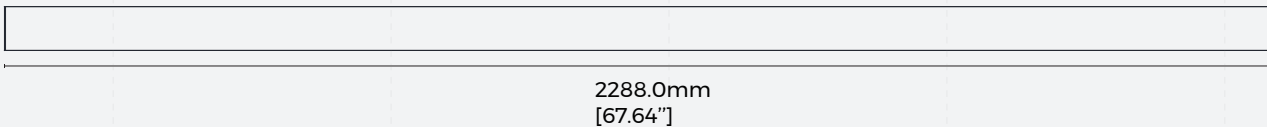
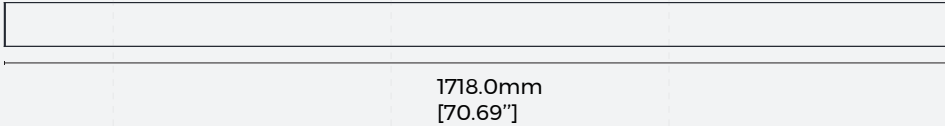
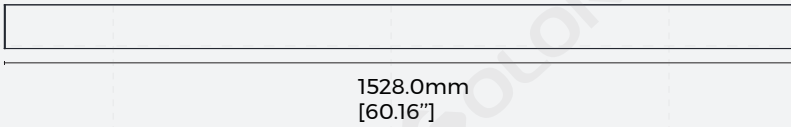
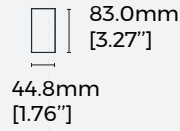
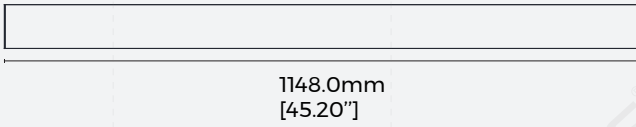


Luminous intensity distribution diagram



AAI Figure

[Product mechanical data]



Note: Luminaires length shown above indicates the length of profile + thickness of 2 end caps, where each end cap is 3.5mm thick, 2 end caps is 7mm thick in total.

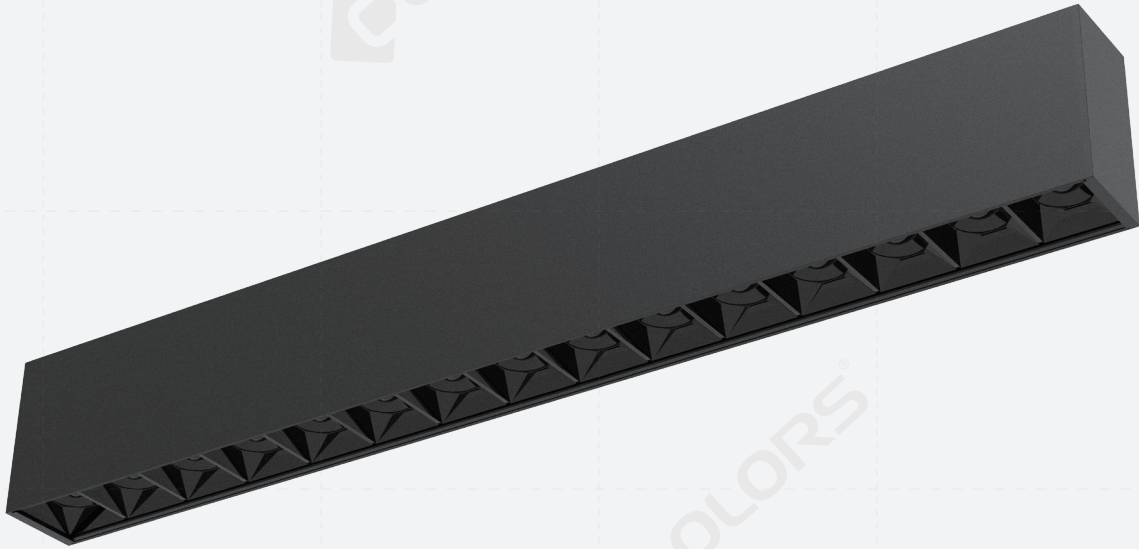
[Product Accessories Information]

Picture	Section size	Name	Description	Model	Note
		Splicing bar (external)	Size:L110*W15.5*H11.7mm [Inch size:L4.33"*W0.61"*H0.46"]	EX-41	Splicing accessories
		Splicing bar (internal)	Material:SPCC Size:L135*W41.4*H42.2mm [Inch size:L5.31"*W1.63"*H1.66"]	EX-46(N)	
	/	Pendant cable (with junction box)	Junction box L80*W80*H30mm [Inch Size:L3.15"*W3.15"*H1.18"] Steel cable D1.5*2000/4000mm [Inch Size: D0.06"*78.74"/157.48"]	PY-D	Pendant installation accessories
	/	Pendant cable	Steel cable D1.5*2000/4000mm [Inch Size: D0.06"*78.74"/157.48"]	PN-D	
		Track pendant rod	Material:Fe Size:phi13.5*(500/1000)mm [Inch size:phi0.53*(19.69"/39.37")] Other:0.5-1.0/1.0-2.0M adjustable [19.69"-39.37"/39.37"-78.74"]	PG-I	
		Pendant installation clip	Material:Stainless steel Size:L31.6*W20mm*H5.8mm [Inch size:L1.24"*H0.79"*H0.23"]	CP-44	
		L-shaped corner (60°)	Material:AL6063-T5 Size:L200*W173.2*H83.0mm [Inch size:L7.87"*W6.82"*H3.27"]	L60-LS40	Pendant standard corner
		L-shaped corner (90°)	Material:AL6063-T5 Size:L200*W200*H83.0mm [Inch size:L7.87"*W7.87"*H3.27"]	L90-LS40	
		L-shaped corner (120°)	Material:AL6063-T5 Size:L200*W195.6*H83.0mm [Inch size:L7.87"*W7.70"*H3.27"]	L120-LS40	
		Y-shaped corner	Material:AL6063-T5 Size:L368.8*W319.4*H83.0mm [Inch size:L14.52"*W12.57"*H3.27"]	Y120-LS40	
		X-shaped corner	Material:AL6063-T5 Size:L400*W400*H83.0mm [Inch size:L15.75"*W15.75"*H3.27"]	X90-LS40	

【Version Type】

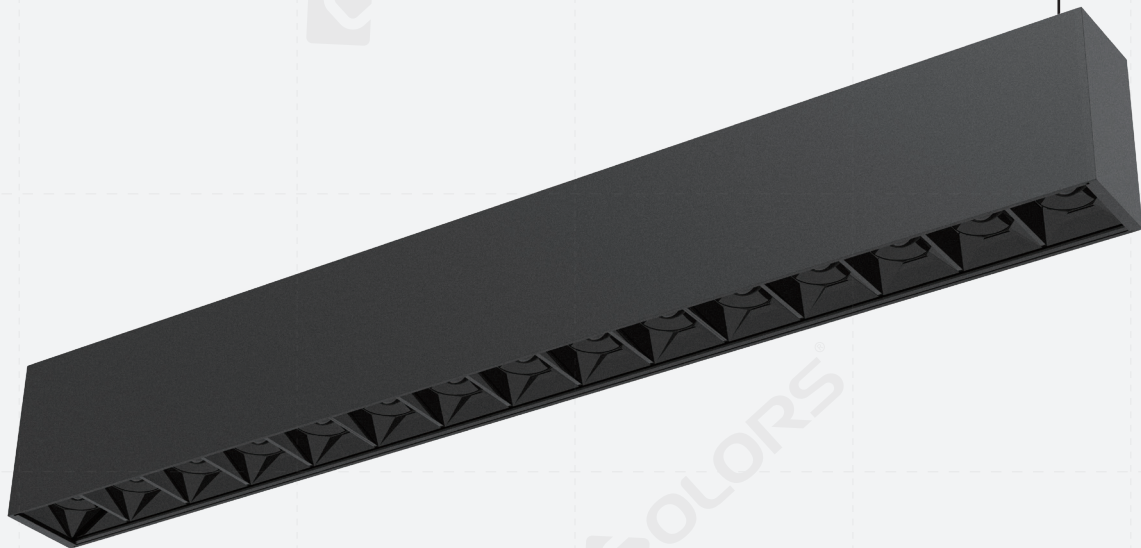
【Normal】

- 85(18°) /100(30° / 45°)lm/W
- Dimming method: Non / 1-10V / DALI+push



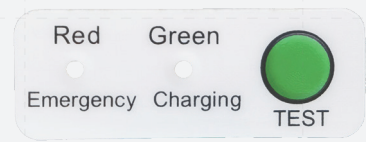
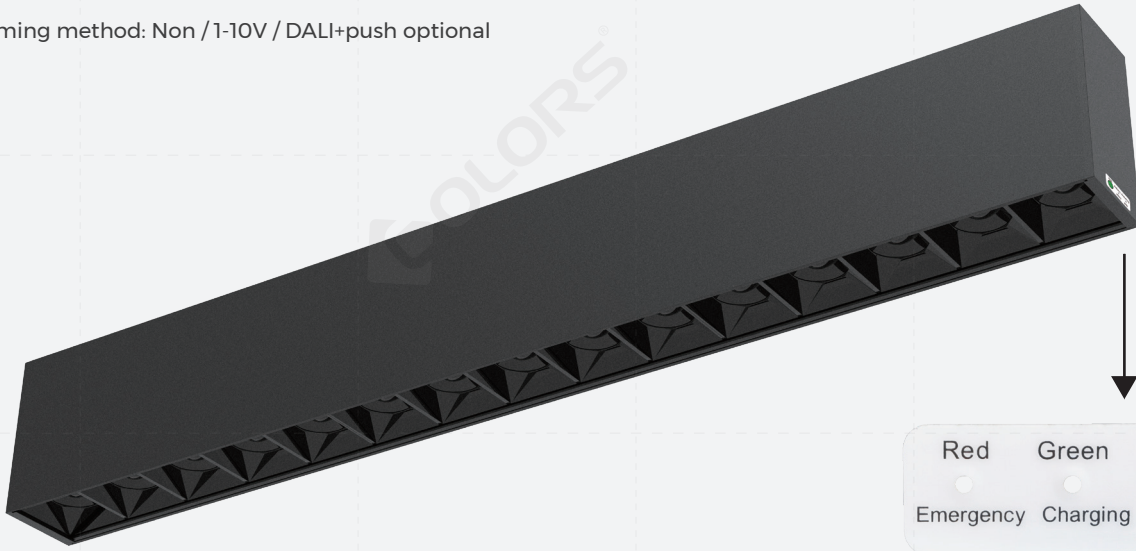
【Dial switch CCT control】

- Dimming method: Non/ 1-10V/ DALI+push optional
- 2700K/4000K/6500K 3-tier CCT adjustable, can achieve general lighting demands



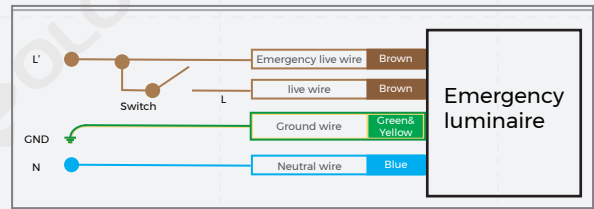
[Emergency model]

· Dimming method: Non / 1-10V / DALI+push optional



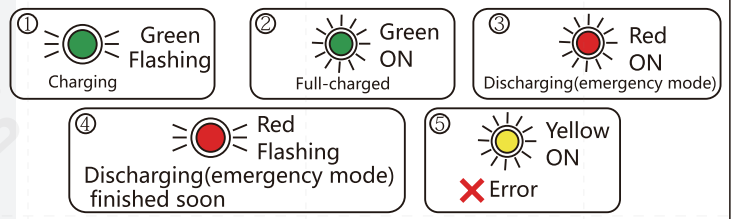
· Technical parameters:

- Input voltage: 220-240VAC/50-60Hz
- Input current/power: 50mA/4W
- Charging time: 24 hours
- Power(emergency mode): 4W constant power output
- Battery capacity: 7.4V 2500mAh
- Emergency time: ≥3 hours
- Emergency light efficiency: ≥85(18°) / 100(30° / 45°)lm/W



Indicator light introduction

- ① Green/flashing: Charging
- ② Green/on: Full-charged
- ③ Red/on: Discharging(emergency mode)
- ④ Red/flashing: Discharging(emergency mode) finished soon
- ⑤ Yellow/on: Error



Test switch introduction

Press the test switch to confirm whether the emergency function is normal



[Packing]

Model	Size (mm/box)	Quantity /box	Quantity /carton	NW (kg)	NW /carton/(kg)	GW (kg)	Size (mm/carton)
LLS-LH40GHFBS1200(N)- T41NW8N-DC	1200*61*98 [47.24**2.40**3.86"]	1	4	2.82	11.28	12.81	1220*142*216 [40.03**5.59**8.50"]
LLS-LH40GHFBS1500(N)- T56NW8N-DC	1580*61*98 [62.20**2.40**3.86"]	1	4	3.41	13.64	15.48	1600*142*216 [62.99**5.59**8.50"]
LLS-LH40GHFBS1700(N)- T62NW8N-DC	1770*61*98 [69.69**2.40**3.86"]	1	4	4.00	16.00	18.15	1790*142*216 [70.47**5.59**8.50"]
LLS-LH40GHFBS2300(N)- T80NW8N-DC	2340*61*98 [92.13**2.40**3.86"]	1	4	5.18	20.72	23.49	2360*142*216 [92.91**5.59**8.50"]

[Attentions]

- 1、 Non-professionals are prohibited from installing, disassembling and repairing the product.
- 2、 Avoid scratching, distortion and irregular bending of the product during installation; otherwise it may cause irreparable damage to the product.
- 3、 Do not use any acid or alkaline adhesive to fix products.
- 4、 The product is only suitable for indoor dry places, can not be used in outdoor, seaside or wet environment.
- 5、 PC features: Each 10°C rise or drop will make diffuser extend or shrink 0.8mm/m, please confirm before processing and use.